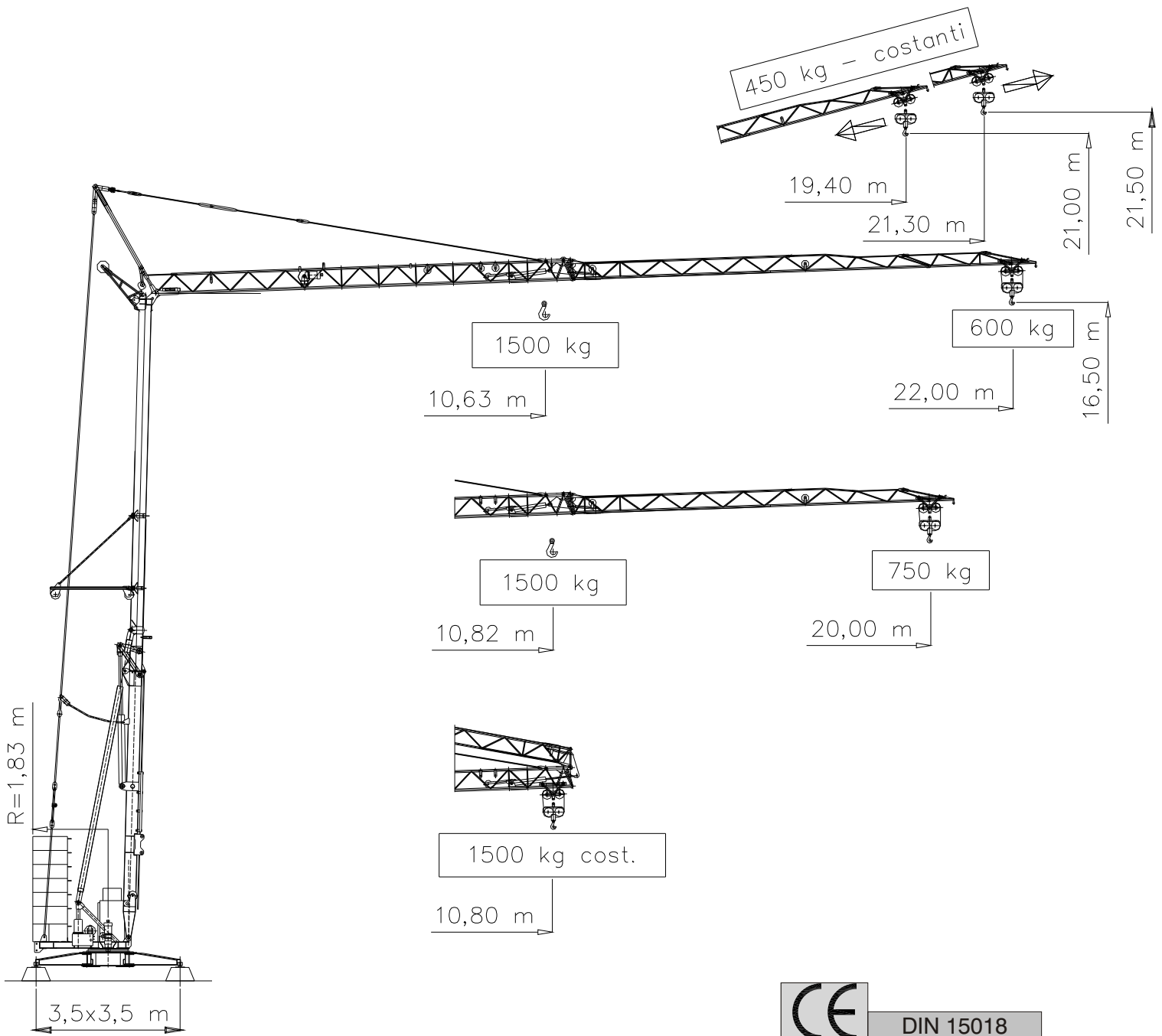




MaSol S.R.L.®
MACCHINE SOLLEVAMENTO

H.S. 22.06



MA.SOL. s.r.l.

Stabilimento ed uffici: via Buonarroti 26/7 26024 Paderno Ponchielli (CR) Italy - Mecc. Estero CR 010071
Tel.: +39 0374 367098 - Fax: +39 0374 367128 - E-mail: info@masol.it - Web: www.masol.it

СХЕМЫ ГРУЗ - Curbe de Sarcina - Load curves - Curve di carico

















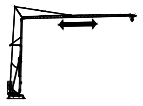


→	10,63	12	14	16	18	20	22	m
→	1500	1295	1075	920	765	675	600	kg



→	10,82	12	14	16	18	20	m
→	1500	1325	1100	940	785	750	kg

наклонённой стрелой - Brat Inclinat
Luffing jib - Braccio impennato

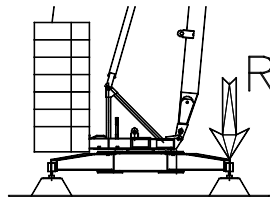
450 kg - cost.

				m/min	kg	CV-PS hp	kw
ПОДЪЁМ Ridicare Hoisting Sollevamento	TRIFASE 1 	2 Vitesse Geschwind. Speed Velocità		8,5	1500	3	2,2
				34	700	7	5,14
		3 Vitesse Geschwind. Speed Velocità		4	1500	1,75	1,3
				17	1500	7,5	5,5
				34	700	7,5	5,5
				34	700	7,5	5,5
	MONO-TRIFASE 2 	Trifase		14	1500	5,5	4
				22	900		
				32	600		
			Monofase		10	1500	5,5
				17	900		
	25	600					
ПЕРЕМЕЩЕНИЕ ТЕЛЕЖКИ - Distributie Caruciorului Trolleying - Carrello				28,5		1,5	1,1
ВРАЩЕНИЕ - Rotatie Slewing - Rotazione				0,85 rpm - g/min		3 daNm	
ПЕРЕМЕЩЕНИЕ КРАНА - Deplasare Travelling - Traslazione	380 V 50 hz 	электрoэнергии - Putere Main supply - Potenza		220 V 380 V 3 kw 10 kw		Спросите нас Consultati-ne - Consult us Consultarci	
		ГЕНЕРАТОР ЭНЕРГИИ Grup Electrogen - Generator set Gruppo elettrogeno					

Вес крана без осей - Greutatea Macaralei fara Tren de rulare Dead weight without transport axles - Peso della gru senza assali	5680 kg
Вес балластов - Masa Contragreutatii - Ballast weight - Peso zavorra rotante	10000 kg

Modification réservés - Änderungen vorbehalten - Subject to modification - Con riserva di modifiche

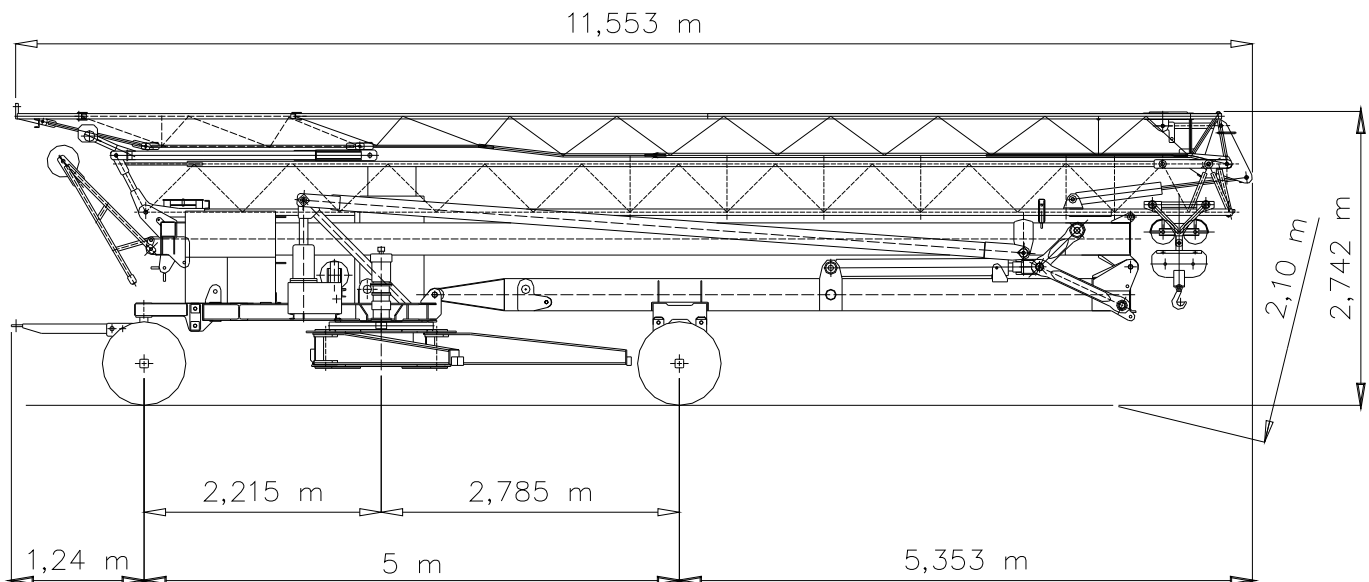
РЕАКЦИЯ - Reactii in reazame - Reactions - Reazioni



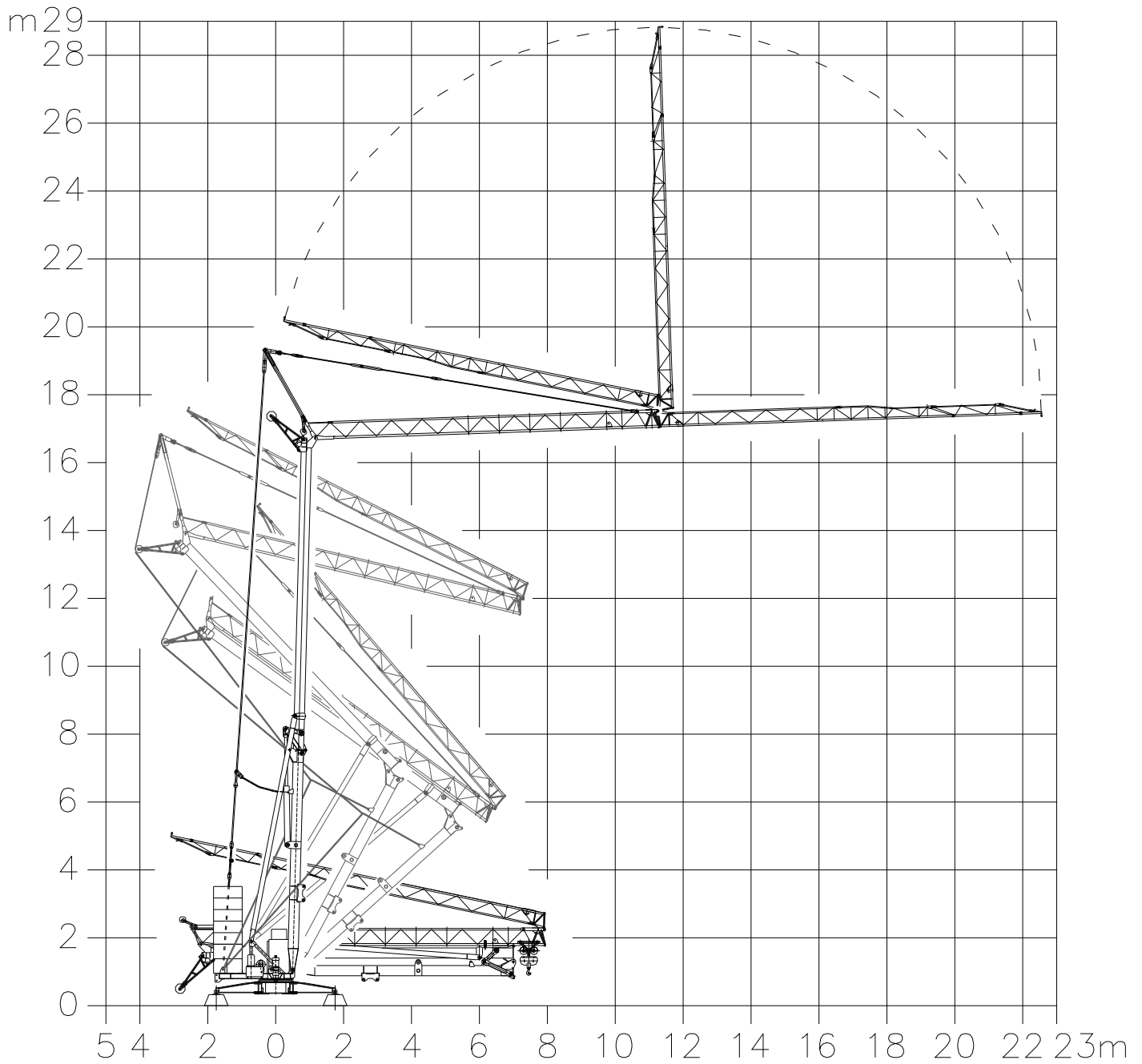
R ● 9600 daN ■ 6500 daN

● в эксплуатации	● In Functiune	● In service	● In servizio
■ вышли из строя	■ Oprit	■ Out of service	■ Fuori servizio

ПОЛОЖЕНИЯ БУКСИРОВКИ - Modalitate de Transport Kind of transport - Soluzione di traino



монтаж - Montaj - Erection - Montaggio



MA.SOL. s.r.l.
Stabilimento ed uffici:
via Buonarroti 26/7
26024 Paderno Ponchielli (CR) Italy
Mecc. Estero CR 010071
Tel. +39 0374 367098
Fax +39 0374 367128
E-mail: info@masol.it
Web: www.masol.it

